

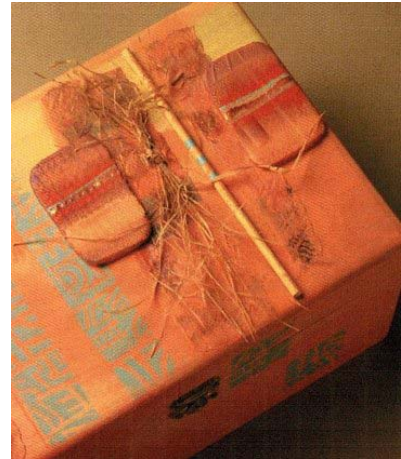
Baseball Cap Project with Sherrill's Sorbets

Sherrill's Sorbets

Sherrill's Sorbets are a matte, opaque, light bodied acrylic. The colours are soft and gorgeous and work beautifully with Lumiere, Neopaque, dye Na flow and Textile Colours. Sherrill's sorbets are quite simply one of the most versatile paints that you will use. They rubber stamp beautifully, go on dark surfaces like jean fabrics without becoming stiff and dilute with water to look like chiffon when used as washes. Because they remain soft and pliable on fabric that are a wonderful choice for painting and decorating garments.

The sorbets have incredible coverage ability. Sorbets can cover even the most difficult surfaces because of their opacity. When the sorbets are rubberstamped or painted on any surface, they act as a resist to liquid paint applied over them after they are dry. They are especially dramatic when combined with dye na flow washes. The sorbets can be glazed with Textile colours, the two paints combining to make a gorgeous colour.

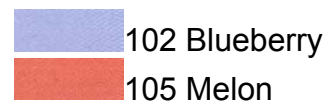
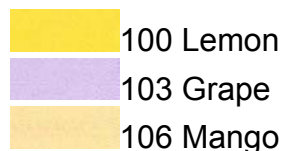
Placing an applicator tip on the squeeze bottles turns the sorbets into applicator tipped paints, making it easy to highlight chosen areas of your design. Sherrill frequently highlights areas of her design with applicator tipped paint.



Heat setting the sorbets:

If painting sorbets on fabric, it is necessary to heat set the fabric. Iron the fabric on the wrong side for 2 to 3 minutes on a heat setting appropriate to the fabric you have painted.

Sherrill's sorbets are available in an exciter pack or as a Eight colour set
JPAC9930 - Contains 9 14ml (1/2oz.) bottles - 8 colours plus Lumiere Halo Pink gold
JPSS100S – Contains all eight sorbets colours in 66.5ml (2.25 oz) bottle



Baseball Cap Project with Sherrill's Sorbets

Painted and rubber stamped baseball cap. Designed by Sherrill Kahn for Jacquard Products

Baseball caps are very popular and so easy to paint and rubber stamp. The techniques discussed in the project could be used on wooden boxes, tee shirts, creative books or any other creative project that you choose.

Materials

- Baseball cap in any colour
- Small sponge squares cut to about 1" x 1"
- (Sherrill uses hydrophilic sponges from the paint, tile and wallpaper departments of the local hardware store.)
- Sorbets in the colour of your choice.
- Unmounted rubber stamps.

Directions

1. Squeeze a sorbet colour on your sponge square and lightly apply the colour to the cap in areas of your choice.
2. Repeat step one with other sorbet colours until satisfied with the over all pattern of colour.
3. Place a rubber stamp face up on a paper towel. Squeeze a contrasting sorbet colour on your sponge and pat the colour onto the rubber stamp. Print the rubber stamp design on your cap in selected areas. Since the stamp is unmounted it is easy to bend the stamp to go in rounded areas.
4. Repeat step three with other rubber stamps and other sorbet colours until satisfied.
5. Add Halo Pink Gold applicator lines to highlight selected areas.

